



# GeoVITe Manual

Version 1.0, 25.06.2019

# Contents

- 1. GeoVITe manual ..... 3
- 2. First Steps ..... 4
  - 2.1. Checklist for first-time users of GeoVITe ..... 4
  - 2.2. Further information on the service ..... 4
- 3. Download service ..... 5
  - 3.1. Nice to know ..... 5
  - 3.2. Access ..... 5
  - 3.3. Functionalities ..... 6
    - 3.3.1. Selected data excerpt ..... 6
    - 3.3.2. Selected time span ..... 6
    - 3.3.3. Search window ..... 7
  - 3.4. Download ..... 7
  - 3.5. Creating and sharing lists ..... 9
  - 3.6. Additional instructions on the download service ..... 9
- 4. Support ..... 10
  - 4.1. Nice to know ..... 10
  - 4.2. Scope of the support ..... 10
- 5. Terms of use of GeoVITe ..... 11
- 6. Contact ..... 13

## Release notes

25.06.2019                      Version 1.0                      final

## 1. GeoVITe manual

GeoVITe, the portal for geodata in teaching and research, facilitates direct access to federal and cantonal geodata for students and staff of Swiss universities. Access authorisation for the data is contingent upon your own university's participation and a SWITCHaai login account.

This handbook describes the browser-based download access. Detailed information is provided on the [website](#), in the [FAQs](#).

## 2. First Steps

### 2.1. Checklist for first-time users of GeoVITe

Please check whether you fulfil the following conditions prior to using the GeoVITe service:

- Your university has access to GeoVITe
- You have a valid university account (SWITCHaai, attribute *edupersonaffiliation* with status member, staff or student)
- You use a current browser (recommended: Chrome)
- You know the [Terms of use](#)
- You know where to find the [FAQs](#) and [Support contact form](#)

### 2.2. Further information on the service

- [Data access \(incl. tutorial videos\)](#)
- [FAQs](#)
- [Contact form](#)

### 3. Download service

#### 3.1. Nice to know

- Access via browser, no data analysis possible in browser (only visualisation and download)
- Size of the possible data excerpt depends on layer (remove unnecessary layers from the selection!)
- Searches within the download service possible (search field at top edge)
- Depending on the dataset, different time spans/publication years available
- Data excerpts and download list can be shared with other users

Data access via the download service is browser-based. The geodata sets available can be displayed directly in the browser and (depending on the dataset) narrowed down to individual layers, a particular resolution or a particular time span. The excerpt selected can be downloaded for further processing in your own GIS program.

#### 3.2. Access

The access is via the website <http://geovite.ethz.ch/>.

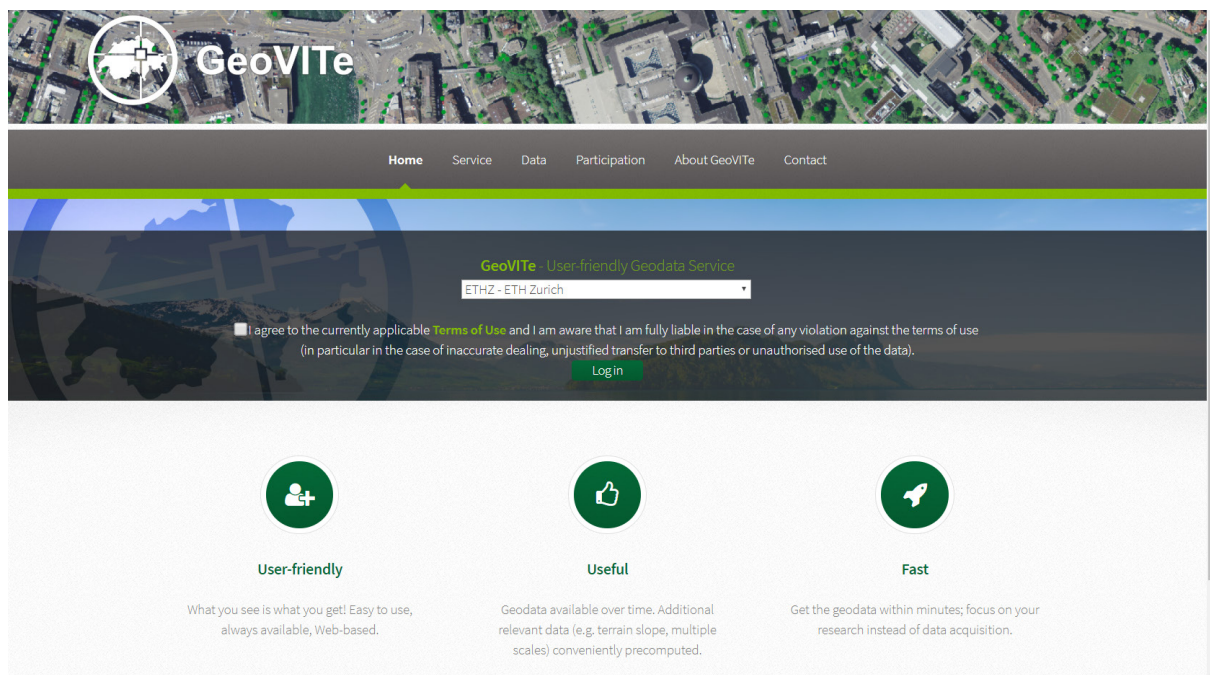


Figure 1: Homepage geovite.ethz.ch

After choosing their university, the user needs accept the terms of use with a tick and then log in via the SWITCHaai authentication window with their user name and password.

### 3.3. Functionalities

The download browser offers the user a series of functionalities.

#### 3.3.1. Selected data excerpt

The data excerpt can either be selected and positioned using the green extent box or the exact coordinates can be entered under “Select extent”.

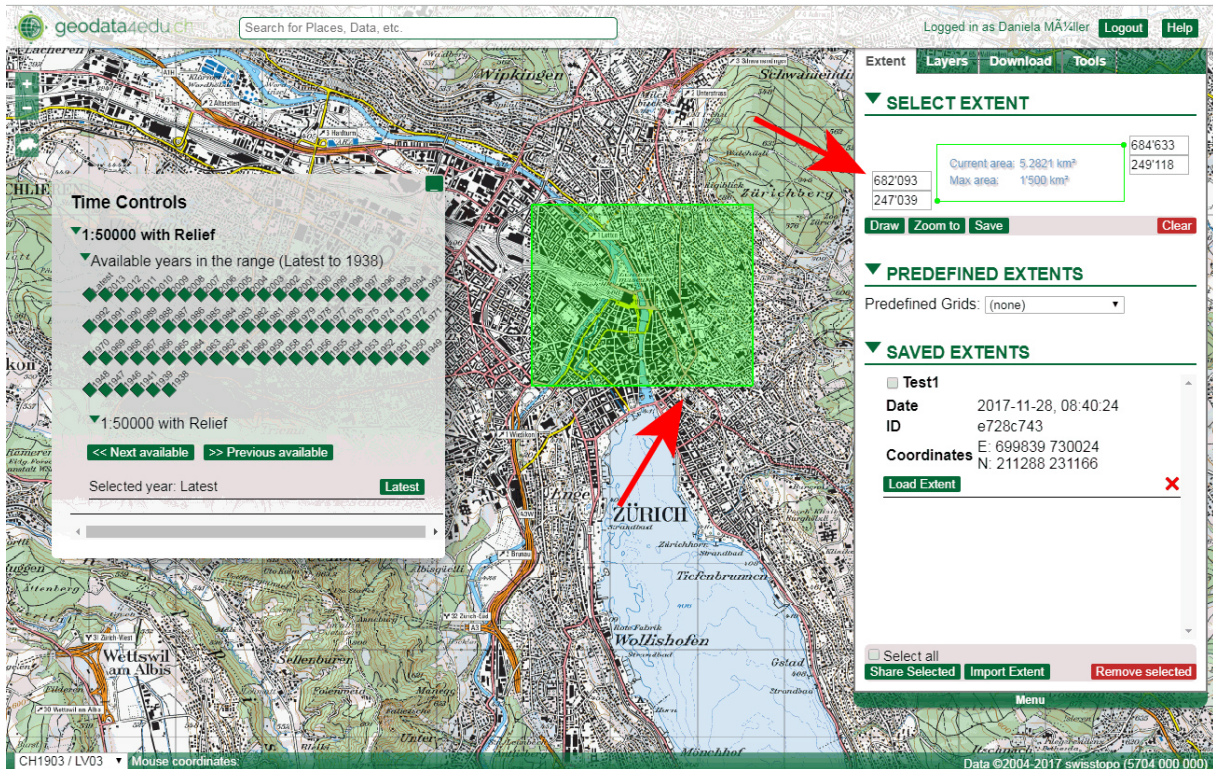


Figure 2: Defining the extent either via the green selection box or in the extent layer by entering the perimeters.

The possible excerpt size for download is restricted due to technical requirements. The selected area and the maximum possible area for download for the individual datasets is indicated under Extent > Select Extent.

It is possible to include the adjacent area around the defined extent automatically for the download (see Chap. 3.4.).

#### 3.3.2. Selected time span

If several time spans are available for a dataset, the time span (year of issue) can be selected individually for every selected dataset via the “Time Controls” window.

Please note that only the corresponding data available (publication year) will be displayed for a selected time span. This can result in large areas in the display remaining empty (especially for aerial photographs and maps).

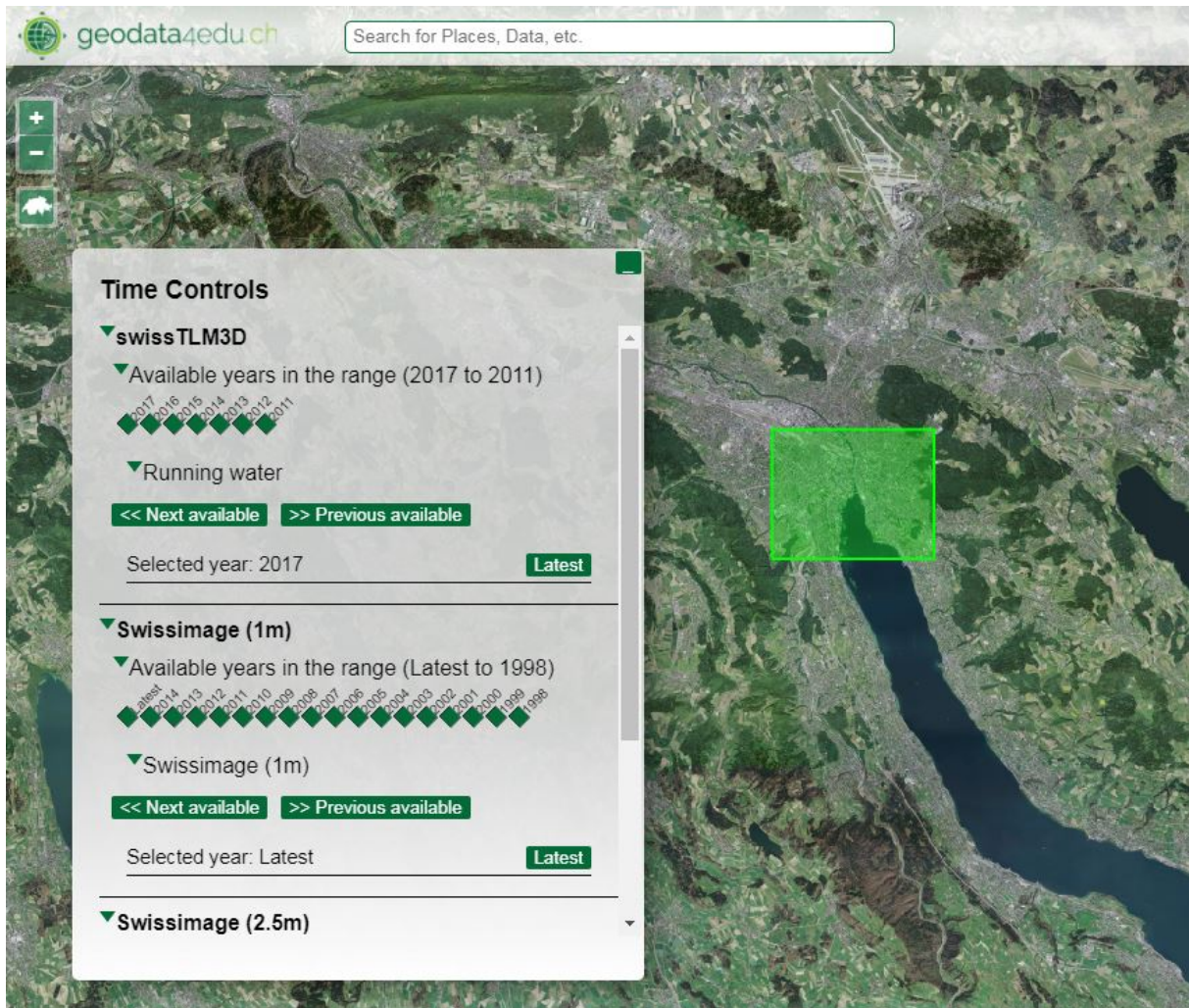


Figure 3: Time controls table in the download service

### 3.3.3. Search window

Using the search field in the upper section of the image, you can search for specific places, coordinates and datasets. Coordinates can be entered in the reference frames LV03, LV95 and WGS84 (e.g. "8.03, 46.00").

## 3.4. Download

All the datasets available for download are listed under Layers > Select Datasets. The datasets can be activated and deactivated again at will by placing a tick.

After the excerpt/extent for the layer has been determined as desired (see 3.3.1. Selecting data excerpt), the dataset/layer can be added by clicking on the scissor symbol on the download list.

You have the option of selecting only the extent marked in green or extracting the adjacent area of the same excerpt size automatically.

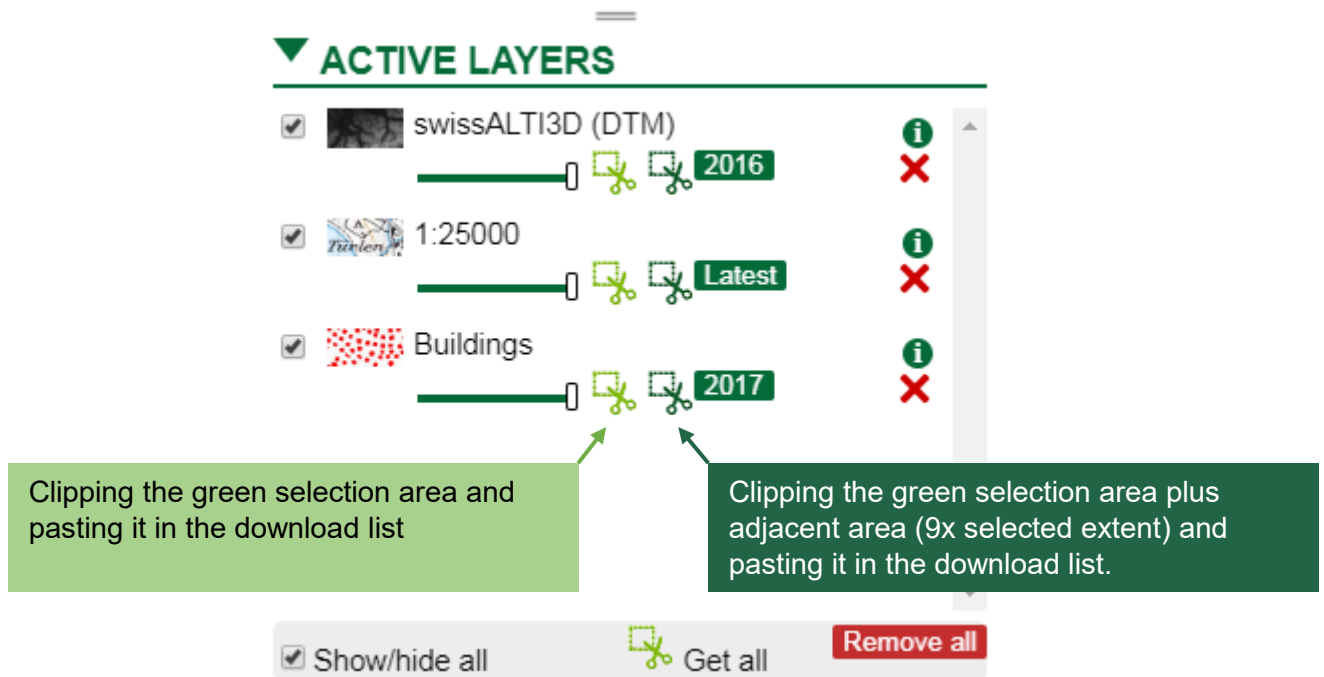


Figure 4: Clipping the defined extent (individually or multiple).

Every dataset can be added to the download list individually or all the selected datasets can be added at once with the command “Get all”.

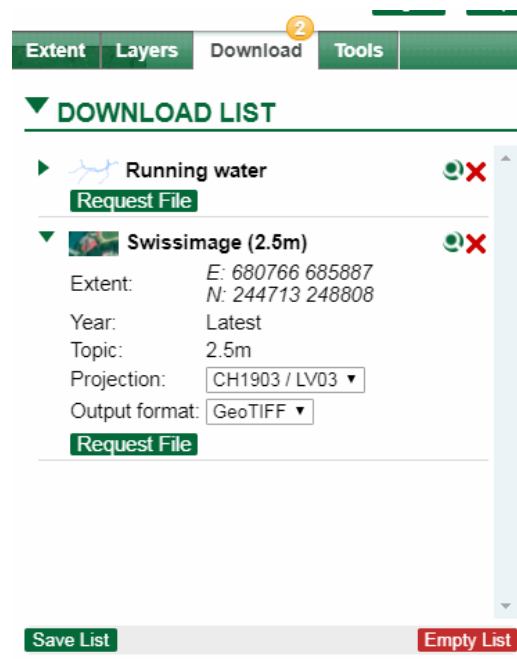


Figure 5: Detailed view of the selected dataset in the download list. The reference system and data format can be stipulated before downloading via projection and output format.

The data excerpts deposited in the download list can now be requested using the “Request file” command. The data will then be available for download. The data’s output format can be selected in the detailed view.



### 3.5. Creating and sharing lists

The download service offers the option of saving and sharing the extents and download lists you have created.

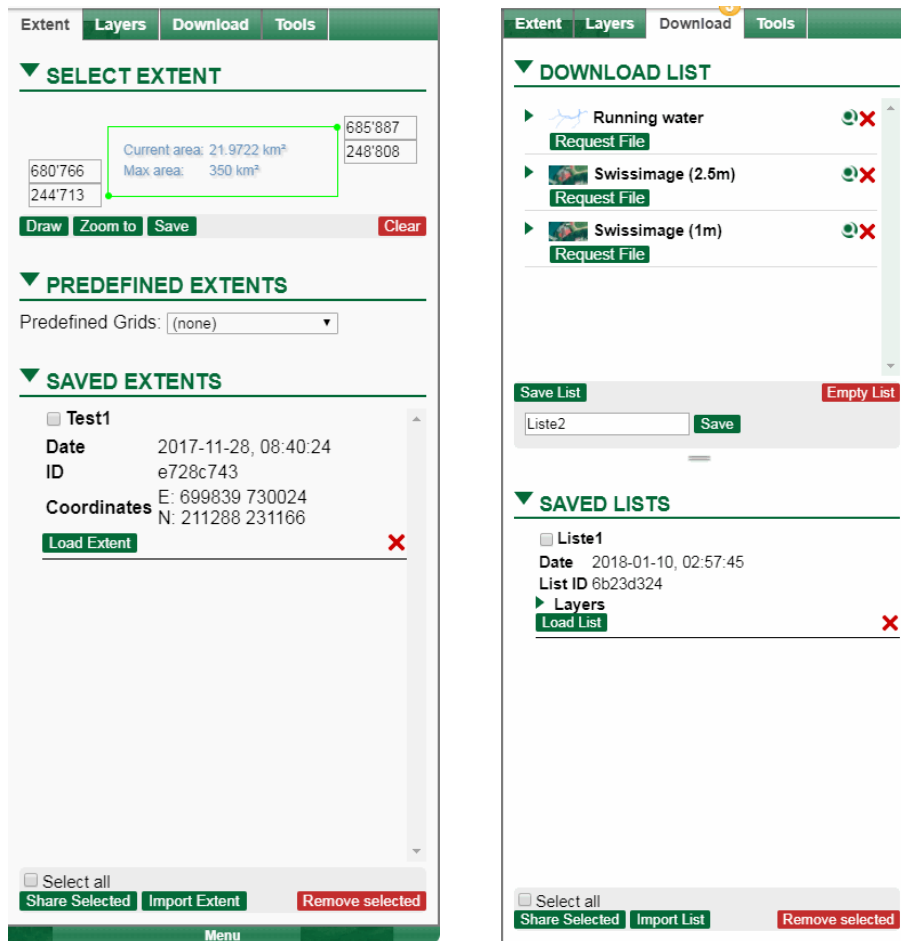


Figure 6: Sharing extent lists or download lists via email

The saved extents and lists can be shared with researchers and students. This is contingent upon the email address being the official email address of the university member, this person having a SWITCHai account and the university being a member of GeoVITe.

The recipient is informed of the extents/lists shared when he or she next logs on to the download platform. No message is sent to the email address.

### 3.6. Additional instructions on the download service

Detailed instructions on using the download service under [Data Access](#) and [FAQs](#).

## 4. Support

### 4.1. Nice to know

- Support is available to all GeoVITe users.
- Contact via [Kontaktformular](#) or [geovite@library.ethz.ch](mailto:geovite@library.ethz.ch)
- Response time to queries: approx. one working day (service times Mon.– Fri., 10:00 - 16:00)
- Content-related support on GeoVITe, no support on application issues or search requests outside GeoVITe

### 4.2. Scope of the support

GeoVITe's support service can either be reached via the [contact form on the website](#) or directly at [geovite@library.ethz.ch](mailto:geovite@library.ethz.ch).

The GeoVITe support offers end users from the participating institutions support on technical problems and questions on accessing the datasets. The support helps with the use and operation up to and with the provision of data via the download service for further processing in GIS programs.

More in-depth questions regarding analysis options within the GIS systems and search questions regarding unavailable datasets from other providers as Swiss federal and cantonal offices cannot currently be processed and should be addressed to the specialists from your own institution.

## 5. Terms of use of GeoVITe

Status: 24. June 2019

### Use

The geodata provided may be used only for teaching and research purposes within the university obtaining the service. Use of the geodata or parts thereof for purposes other than those specified herein especially commercial purposes, is generally not permitted and requires separate contractual arrangements between the service recipient and swisstopo.

### Transfer to third parties

Geodata or geodetic products may **not be transferred to third parties**, including other universities. When transferring data within one's own university, it is necessary to ensure that all users are familiar with these terms of use. In the case of research projects conducted in collaboration with third parties, the participating universities must first obtain appropriate written authorisation from the licence supplier of the geodata in question.

### Storage

Storage of the geodata provided on unprotected, anonymous servers and on unattended data carriers is forbidden. The original data must be deleted by the end user immediately after completing the training or research project or when one's institution terminates the contract with ETH Zurich.

### Conditions of reproduction

Results based on the data provided may be reproduced without further clarifications as follows:

*Digital reproduction:* Extracts with a maximum size of 2 million pixels as static images or PDF files in original scale with a maximum format of DIN A3, printouts from websites for personal use only.

*Analog reproduction:* Scale 1:1, enlarged or reduced, monochrome or polychrome, maximum format of DIN A3 and maximum number of 500 copies.

Publications are permitted without further permission in research papers and scientific works (seminar papers, diploma theses, master's theses, dissertations, teaching material, etc.) with a maximum number of 500 copies.

Reproductions which exceed the aforementioned specifications require the permission of the license supplier.

### Citing sources and authorization

A clear and visible source note of the data set used must be stated on all reproductions (analog and digital).

- Data swisstopo: **Geodaten © swisstopo**

## **Publications with special authorization**

Special written authorization from the license suppliers is required in the following cases:

- Publications of products in direct or derived graphical analogue form, or parts or derivatives thereof, if more than 500 copies are issued for solely scientific publications.
- Direct digitalization (vectorization) of map contents, or parts thereof, which are not to be used purely for teaching or research purposes.
- Publications of products or services on the Internet with an image size greater than 2 million pixels for static images or as a map viewer.

## **Liability**

The service recipients are liable for damages caused by them or their users in the event of non-compliance with the respective license conditions and these terms of use as well as in the event of incorrect dealing, unauthorized transfer or unauthorized use of the data.

ETH Zurich cannot guarantee the correctness, up-to-dateness, completeness or accuracy of the data.

## **Data protection**

ETH Zurich reserves the right to store personal data (access time, datasets, etc.) for the purpose of evaluation and anonymized statistics as well as for traceability in the event of misuse. Personal data will not be transferred by ETH Zurich or the ETH Library to third parties, unless required by law or for contract fulfilment, or used for marketing purposes.

## **Other provisions**

In addition to the present Terms of Use, the Terms of Use and License of the respective data suppliers (e.g. swisstopo) shall apply. See: <http://geovite.ethz.ch/TermsOfUse.html>.

In all other respects, the terms of the Federal Act on Geoinformation (SR 510.62) and the Photogrammetric Survey Ordinance of 21 May 2008 (SR 510.626) apply.

## 6. Contact

ETH Zürich  
ETH-Bibliothek  
Karten  
Rämistrasse 101  
8092 Zürich

ETH Zürich  
Institut für Kartografie und Geoinformation  
Stefano-Frascini-Platz 5  
8093 Zürich

[geovite.ethz.ch](http://geovite.ethz.ch)  
[geovite@library.ethz.ch](mailto:geovite@library.ethz.ch)